

# NSWNMA EDUCATION CALENDAR



## NSWNMA FORUMS

### PREPPING FOR INTERVIEWS – ½ Day

**NEW**

■ **WATERLOO** Fri 28 July

For undergraduates

Members: \$10 | non-members: \$30

### MEDICATION SAFETY

**NEW**

– ½ Day

- **WATERLOO** Wed 8 March / Thurs 18 May / Wed 29 November
- **LIVERPOOL** Wed 26 April
- **NEWCASTLE** Wed 27 September

For all nurses and midwives

Members: \$40 | non-members: \$85

### PRACTICAL, POSITIVE LEADERSHIP SERIES – 4 Days

- **WATERLOO**
- MODULE 1 – Monday 3 April
- MODULE 2 – Monday 1 May
- MODULE 3 – Monday 5 June
- MODULE 4 – Monday 3 July

For all N/MUM, CNS, CNC, Nurse/Midwife Educator, senior RNs & midwives

Members: \$340 | non-members: \$600

### THE INFLUENTIAL THOUGHT LEADERS IN LEADING – 1 Day

- **WATERLOO** Mon 19 June
- **PARRAMATTA** Wed 1 November

For new managers, senior managers, senior RNs, DONs, DDONs

Members: \$125 | non-members: \$225

### MANAGING OVERTHINKING

– 1 Day

- **WATERLOO** Fri 17 March
- **WAITARA/HORNSBY** Mon 10 July

For all nurses and midwives

Members: \$85 | non-members: \$170

### ARE YOU MEETING YOUR CPD REQUIREMENTS?

– ½ Day

- **BATEMANS BAY** Tue 28 March
- **GYMEA** Fri 7 April
- **WATERLOO** Fri 5 May
- **NEWCASTLE** Wed 10 May
- **PORT MACQUARIE** Tue 23 May
- **ARMIDALE** Tue 20 June
- **DUBBO** Wed 12 July
- **WAGGA WAGGA** Thurs 27 July
- **COFFS HARBOUR** Tue 29 August
- **BALLINA** Thurs 2 November

For all nurses and midwives

Members: \$40 | non-members: \$85

### LEGAL AND PROFESSIONAL ISSUES FOR NURSES AND MIDWIVES – ½ Day

- **BATEMANS BAY** Wed 29 March
- **NEWCASTLE** Thurs 11 May
- **PORT MACQUARIE** Wed 24 May
- **ARMIDALE** Wed 21 June
- **DUBBO** Thurs 13 July
- **WAGGA WAGGA** Fri 28 July
- **COFFS HARBOUR** Wed 30 August
- **BALLINA** Fri 3 November
- **GYMEA** Fri 17 November

For all nurses and midwives

Members: \$40 | non-members: \$85

### PRACTICAL SKILLS IN GETTING PEOPLE ON-SIDE – 1 Day

**NEW**

- **WATERLOO** Fri 31 March, Wed 8 November

For all nurses and midwives

Members: \$85 | non-members: \$170

### FOOT CARE FOR NURSES

– 2 Days

- **WATERLOO** Thurs 6 & Fri 7 April / Thurs 16 & Fri 17 November
- **COFFS HARBOUR** Thurs 6 & Fri 7 July

For RNs, ENs and AINs

Members: \$203 | non-members: \$350

### PRACTICAL STRATEGIES IN MANAGING STRESS AND PREVENTING BURNOUT – 1 Day

- **WATERLOO** Wed 12 April
- **LIVERPOOL** Fri 11 August

For all nurses and midwives

Members: \$85 | non-members: \$170

### TOOLS IN MANAGING CONFLICT AND DISAGREEMENT – 1 Day

- **PARRAMATTA** Fri 12 May
- **WATERLOO** Mon 9 October

For all nurses and midwives

Members: \$85 | non-members: \$170

### PRACTICAL SKILLS IN MANAGING DIFFICULT AND AGGRESSIVE CLIENTS – 1 Day

- **WATERLOO** Wed 31 May
- **GYMEA** Fri 20 October

For all nurses and midwives

Members: \$85 | non-members: \$170

### POLICY AND GUIDELINE WRITING FOR NURSES AND MIDWIVES – 1 Day

- **WATERLOO** Fri 21 April / Fri 1 September
- **LIVERPOOL** Fri 9 June

For all nurses and midwives

Members: \$85 | non-members: \$170

### SUBMISSION AND IMPLEMENTATION OF GUIDELINES AND POLICIES – 1 Day

Prerequisite to registering for this course is the completion of the *Policy and Guideline Writing for nurses and midwives* workshop

- **WATERLOO** Fri 24 November

Members: \$85 | non-members: \$170

### APPROPRIATE WORKPLACE BEHAVIOUR FOR NURSES AND MIDWIVES – 1 Day

- **NEWCASTLE** Wed 5 July
- **GYMEA** Fri 1 December

For all nurses and midwives

Members: \$85 | non-members: \$170

### FINANCIAL WELLNESS SEMINAR – ½ day

**NEW**

A HESTA, First State Super and NSWNMA collaboration. Seminars will be held in these locations:

- **WAGGA WAGGA** Thur 27 April
- **WATERLOO** Wed 24 May
- **PORT MACQUARIE** Tue 13 June
- **PARRAMATTA** Thur 15 June
- **NEWCASTLE** Tue 1 August
- **DUBBO** Tue 29 August
- **SHELLHARBOUR** Thur 21 September
- **BALLINA** Wed 1 November

FREE!

### AGED CARE NURSES' FORUM

**Wednesday 10 May, Tweed Heads**

Forum Theme: Elder Abuse

1 Day | RNs, ENs and AINs

Members \$50 | non-members \$75



### ENROLLED NURSES' FORUM

**Friday 26 May, Waterloo**

1 Day | For enrolled nurses

Members \$30 | non-members \$60



### MENTAL HEALTH DRUG AND ALCOHOL NURSES' FORUM

**Friday 8 September, Waterloo**

1 Day | For all nurses

Members \$30 | non-members \$60



### ENVIRONMENTAL HEALTH FORUM

**Friday 15 September, Randwick**

1 Day | For all nurses & interested healthcare workers

Members \$60 | non-members \$85 |

associate members \$30

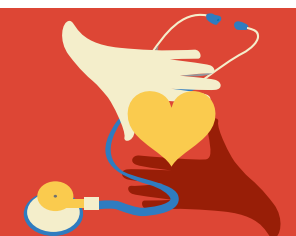


### AGED CARE NURSES' FORUM

**Friday 20 October, Waterloo**

1 Day | For all nurses

Members \$30 | non-members \$60



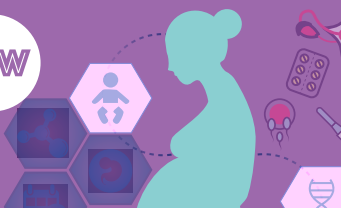
### MIDWIFERY FORUM

**NEW**

**Friday 24 November, Waterloo**

1 Day | For all midwives

Members \$30 | non-members \$60



## REGISTER ONLINE

[bit.ly/NSWNMAeducation](http://bit.ly/NSWNMAeducation)

For enquiries contact NSWNMA  
Metro: 8595 1234  
Rural: 1300 367 962