

NSWNMA EDUCATION CALENDAR



NSWNMA FORUMS

PREPPING FOR INTERVIEWS – ½ Day

NEW

■ **WATERLOO** Fri 28 July

For all nurses and midwives including undergraduates
Members: \$10 | non-members: \$30

MEDICATION SAFETY

NEW

– ½ Day

- **WATERLOO** Wed 8 March / Thurs 18 May / Wed 29 November
- **LIVERPOOL** Wed 26 April
- **NEWCASTLE** Wed 27 September

For all nurses and midwives
Members: \$40 | non-members: \$85

PRACTICAL, POSITIVE LEADERSHIP SERIES – 4 Days

- **WATERLOO**
MODULE 1 – Monday 3 April
MODULE 2 – Monday 1 May
MODULE 3 – Monday 5 June
MODULE 4 – Monday 3 July

For all N/MUM, CNS, CNC, Nurse/Midwife Educator, senior RNs & midwives
Members: \$340 | non-members: \$600

THE INFLUENTIAL THOUGHT LEADERS IN LEADING – 1 Day

- **WATERLOO** Mon 19 June
- **PARRAMATTA** Wed 1 November

For new managers, senior managers, senior RNs, DONs, DDONs
Members: \$125 | non-members: \$225

MANAGING OVERTHINKING – 1 Day

- **WATERLOO** Fri 17 March
- **WAITARA/HORNSBY** Mon 10 July

For all nurses and midwives
Members: \$85 | non-members: \$170

ARE YOU MEETING YOUR CPD REQUIREMENTS? – ½ Day

- **BATEMANS BAY** Tue 28 March
- **GYMEA** Fri 7 April
- **WATERLOO** Fri 5 May
- **NEWCASTLE** Wed 10 May
- **PORT MACQUARIE** Tue 23 May
- **ARMIDALE** Tue 20 June
- **WAGGA WAGGA** Thurs 27 July
- **COFFS HARBOUR** Tue 29 August
- **BALLINA** Thurs 2 November

For all nurses and midwives
Members: \$40 | non-members: \$85

LEGAL AND PROFESSIONAL ISSUES FOR NURSES AND MIDWIVES – ½ Day

- **BATEMANS BAY** Wed 29 March
- **NEWCASTLE** Thurs 11 May
- **PORT MACQUARIE** Wed 24 May
- **ARMIDALE** Wed 21 June
- **WAGGA WAGGA** Fri 28 July
- **COFFS HARBOUR** Wed 30 August
- **BALLINA** Fri 3 November
- **GYMEA** Fri 17 November

For all nurses and midwives
Members: \$40 | non-members: \$85

PRACTICAL SKILLS IN GETTING PEOPLE ON-SIDE – 1 Day

NEW

- **WATERLOO** Fri 31 March, Wed 8 November

For all nurses and midwives
Members: \$85 | non-members: \$170

FOOT CARE FOR NURSES – 2 Days

- **WATERLOO** Thurs 6 & Fri 7 April / Thurs 16 & Fri 17 November
- **COFFS HARBOUR** Thurs 6 & Fri 7 July

For RNs, ENs and AINs
Members: \$203 | non-members: \$350

PRACTICAL STRATEGIES IN MANAGING STRESS AND PREVENTING BURNOUT – 1 Day

- **WATERLOO** Wed 12 April
- **LIVERPOOL** Fri 11 August

For all nurses and midwives
Members: \$85 | non-members: \$170

TOOLS IN MANAGING CONFLICT AND DISAGREEMENT – 1 Day

- **PARRAMATTA** Fri 12 May
- **WATERLOO** Mon 9 October

For all nurses and midwives
Members: \$85 | non-members: \$170

PRACTICAL SKILLS IN MANAGING DIFFICULT AND AGGRESSIVE CLIENTS – 1 Day

- **WATERLOO** Wed 31 May
- **GYMEA** Fri 20 October

For all nurses and midwives
Members: \$85 | non-members: \$170

POLICY AND GUIDELINE WRITING FOR NURSES AND MIDWIVES – 1 Day

- **WATERLOO** Fri 21 April / Fri 1 September
- **LIVERPOOL** Fri 9 June

For all nurses and midwives
Members: \$85 | non-members: \$170

SUBMISSION AND IMPLEMENTATION OF GUIDELINES AND POLICIES – 1 Day

Prerequisite to registering for this course is the completion of the *Policy and Guideline Writing for nurses and midwives* workshop

- **WATERLOO** Fri 24 November

Members: \$85 | non-members: \$170

APPROPRIATE WORKPLACE BEHAVIOUR FOR NURSES AND MIDWIVES – 1 Day

- **NEWCASTLE** Wed 8 November
- **GYMEA** Fri 1 December

For all nurses and midwives
Members: \$85 | non-members: \$170

FINANCIAL WELLNESS SEMINAR – ½ day

NEW

A HESTA, First State Super and NSWNMA collaboration. Seminars will be held in these locations:

- **WAGGA WAGGA** Thur 27 April
- **WATERLOO** Wed 24 May
- **PORT MACQUARIE** Tue 13 June
- **PARRAMATTA** Thur 15 June
- **NEWCASTLE** Tue 1 August
- **DUBBO** Tue 29 August
- **SHELLHARBOUR** Thur 21 September
- **BALLINA** Wed 1 November

FREE!

AGED CARE NURSES' FORUM

Wednesday 10 May, Tweed Heads

Forum Theme: Elder Abuse
1 Day | RNs, ENs and AINs
Members \$50 | non-members \$75



ENROLLED NURSES' FORUM

Friday 26 May, Waterloo

1 Day | For enrolled nurses
Members \$30 | non-members \$60



MENTAL HEALTH DRUG AND ALCOHOL NURSES' FORUM

Friday 8 September, Waterloo

1 Day | For all nurses
Members \$30 | non-members \$60



ENVIRONMENTAL HEALTH FORUM

Friday 15 September, Randwick

1 Day | For all nurses & interested healthcare workers
Members \$60 | non-members \$85 | associate members \$30



AGED CARE NURSES' FORUM

Friday 20 October, Waterloo

1 Day | For all nurses
Members \$30 | non-members \$60

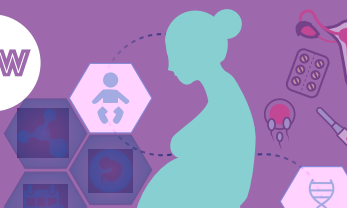


MIDWIFERY FORUM

NEW

Friday 24 November, Waterloo

1 Day | For all midwives
Members \$30 | non-members \$60



REGISTER ONLINE

bit.ly/NSWNMAeducation

For enquiries contact NSWNMA
Metro: 8595 1234
Rural: 1300 367 962